



Message from Mrs Gibbard



Dear Parents and Carers,

We have successfully reached the conclusion of what feels like the longest half-term ever! A huge well done to all the children and staff for their incredible determination and resilience in giving their absolute best right up until the very end!

Our Reception classes had a lovely afternoon yesterday sharing their half term learning with their parents and carers, including a couple of songs in the hall. Thank you to all the parents that attended, it was so lovely to see the children sing so enthusiastically and so excited to show their classrooms and learning to you!

Next half term is always a busy one and we are looking forward to the excitement and festivities of the season! As always, please keep an eye on the calendar, Weekly Bulletins and Year Group pages to keep up to date with what is happening at Barnett Wood.

Thank you once again for your support and involvement in our school community this half term. Your contributions, whether big or small, make a significant impact on the experiences we can offer our children. We wish you all a restful and enjoyable half-term break, and we look forward to welcoming everyone back for the next exciting chapter of the school year!

Kind regards,
Mrs Gibbard



Year Group News



Year R
Hedgehogs and Squirrels



Year 1
Owls and Rabbits



Year 2
Badgers and Foxes

Dates for Diaries

Friday 24th October 3.05pm

School closes for half term week
27th - 31st October.

Monday 3rd November

Children return to school

Tuesday 4th November 3.30-6.30pm

Parent/Teacher Consultation Evening

Thursday 6th November 4.00 - 7.00pm

Parent/Teacher Consultation Evening

Monday 10th November

Odd Socks Day for Anti-Bullying Week

Thursday 13th November 9.30am

Open Morning for Prospective Parents

Friday 14th November

Children in Need Day - wear something spotty or colourful!

Wednesday 19th November

Friends of Barnett Wood 'Pyjama Movie Night'

DON'T FORGET

Clocks go back
this weekend!



Attendance- A message from Mrs Clements



We firmly believe that all children benefit from regular school attendance and that

EVERY SCHOOL DAY COUNTS

This year, one of our school development priorities is to maintain attendance and punctuality and to reduce the percentage of persistent absentees. Please take some time to read our updated Attendance and Absence Policy which can be found here: [Attendance and Absence Policy](#)

Reception		Year 1		Year 2		Whole School
96.1%	98.0%	98.1%	98.7%	97.1%	97.4%	
						97.6%



Congratulations to Rabbits Class for having the highest attendance so far this year!



What does this look like in terms of number of days absent for my child?	100%	97%-99.9%	93% - 96.9%	90% - 92.9%	Below 90%
	Attendance Superstar!	Well done, excellent attendance!	Be careful!	Improvement needed.	Persistent absentee.
Academic year Sept-July	0 days absent	approximately 4 days absent	approximately 10 days absent	approximately 15 days absent	approximately 19 days absent



Keeping up to date with your child's attendance

We'd like to remind you that you can check your child's attendance data by logging into your account on Arbor!

It is a concern when your child's attendance drops below 95%.

We have completed our monitoring for this half term. If your child's attendance is below 93% an Early Concern note will be shared with you at your parent consultation appointment in the first week back.

A reminder to familiarise yourself with our Attendance and Absence Policy in line with the 'Working together to improve school attendance' DfE guidance.

[Attendance and Absence Policy](#)

A reminder that requests for holiday during term time will not be authorised and may incur a fine if your child has 10 or more unauthorised sessions (equivalent to 5 days)



Punctuality is Just as Important as Attendance!

Arriving at school on time each day is just as important as attending school every day. Pupils who arrive on time are prepared and ready to learn when our lessons start. They also enjoy valuable social time with their friends & classmates. Pupils arriving late means learning is lost, teaching is interrupted, classes are disturbed, discomfort for the late arriver and school office staff are interrupted from their main duties.

Harvest Festival



What a lovely way to end the half term with our Harvest Festival last Thursday. The Year 1 and 2 children performed brilliantly and made us all very proud. Thank you to all the parents and families who came to support on the day and for your kind contributions to the collection for Epsom and Ewell Foodbank.



Thank you to Jaynie and all the team at St George's Church for letting us hold our celebration at the church.



thank
★ you ★



The donations were picked up on Friday and the team from the Foodbank want to send their thanks too. Your kindness will make a significant difference to families in need within our community.



Reading at Home



The Power of Reading at Home: Building Lifelong Learners

At Barnett Wood, we believe that reading is the foundation of all learning and a key to unlocking your child's full potential. Reading together at home is one of the most effective ways to support your child's development, not just academically but emotionally and culturally as well.

Why reading at home matters:

Research shows that children who are read to regularly at home develop larger vocabularies and better comprehension skills. According to the Department for Education's Reading Framework (July 2023), children benefit hugely from listening to family members reading aloud. Maryanne Wolf, an expert in reading development, highlights the emotional and educational importance of reading:

"Those children might never reach their full potential as human beings if they never learned to read."

In fact, children who are read to daily hear nearly 300,000 more words by age five compared to those who are never read to. This rich exposure to language helps children understand stories, develop attention skills, and build a love of books that can last a lifetime.



How to make reading at home effective:

The Education Endowment Foundation (EEF) recommends shared book reading as a central part of parental engagement. It's not just about reading the words on the page but engaging your child in conversations about the story, asking questions, and encouraging them to predict what might happen next. This kind of interaction deepens understanding and makes reading a joyful experience.

Practical tips for parents include:

- Create a special, quiet time for reading that feels like a treat.
- Show curiosity about the book: "This book looks interesting. I wonder what will happen next."
- Read with enjoyment and expression to bring stories to life.
- Encourage your child to retell stories in their own words.

We ask parents to spend time reading at home at least three times a week; this can be reading their Little Wandle Book together, reading to your child or taking it in turns.

Please remember to record each read in your child's Reading Record



Our Reading Expectations Letter is attached to this Newsletter email to remind all parents!



Future Leaders

Introducing our new Future leaders, who were democratically elected earlier this half term and will be in post until February half term.



Eco Leaders



Wellbeing Leaders



Lunchtime Leaders



School Council Leaders

Our Lunchtime Leaders led their first assembly this week, sharing their ideas on how we can improve lunchtimes on the playground!



Reading Leaders

My Happy Mind

Promoting Wellbeing and Resilience with My Happy Mind at Barnett Wood

The wellbeing of our pupils is at the heart of everything we do at Barnett Wood. We are committed to nurturing not only the academic growth of our children but also their emotional health and resilience. This year, we are proud to continue our use of My Happy Mind, a programme designed to support mental health and wellbeing in young learners.

My Happy Mind is a research-based programme that helps children develop essential life skills such as kindness, resilience, and emotional regulation—values that closely align with our school's core principles of Kindness, Respect, Trust, Resilience, and Aspiration. Through engaging activities and lessons, pupils learn how to manage their emotions, build positive relationships, and develop a growth mindset that encourages them to be confident and successful learners.



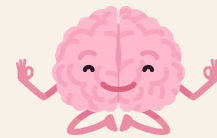
Our commitment to mental health and wellbeing is reflected in our school improvement priorities, where we strive to ensure that every child feels safe, secure, and supported. The My Happy Mind programme complements our efforts in creating a positive school culture and supporting pupils to develop positive attitudes and behaviours for learning.

Click the link to find out more about myHappyMind....



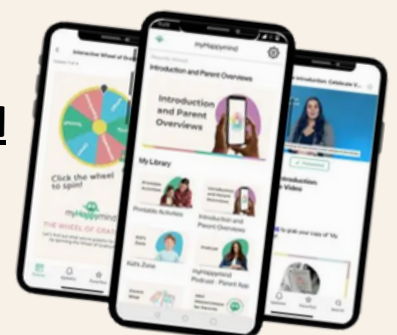
Our teachers have integrated My Happy Mind into the daily curriculum, enhancing pupils' personal development and helping them develop learning skills that will last a lifetime. The programme also supports our work in Early Years Foundation Stage (EYFS), where we tailor our approach to meet the needs of all children, including those with Special Educational Needs and Disabilities (SEND).

We are delighted to see how My Happy Mind is helping our pupils to thrive both emotionally and academically, preparing them for the next stage of their education and life beyond school. We look forward to continuing this journey, ensuring that Barnett Wood remains a happy, caring, and inspiring environment for all.



To support children beyond the classroom, parents can access the My Happy Mind Parent App. This free app provides an insight into what children are learning in school and offers practical tools and activities to help reinforce these positive habits at home. It's a great way for families to build resilience and well-being together. Please see the letter on our website (link below) with details on how to download the app.

My Happy Mind
Parent App
Letter



Odd Socks Day



Odd Socks Day is on Monday 10th November and is a fun and engaging way to kick off Anti-Bullying Week. It encourages everyone to wear mismatched socks to school, symbolising that we are all unique and should embrace our differences. By wearing odd socks, we send a powerful message that it's okay to be different and that we should celebrate our individuality.

Why is Anti-Bullying Week Important?

Anti-Bullying Week is an annual event that aims to raise awareness about bullying and its impact on young people. It provides an opportunity for schools to come together to discuss the importance of kindness, respect, and inclusion. At Barnett Wood, we believe that every pupil has the right to feel safe and happy at school, and we are committed to creating a culture of respect and support.



Together, let's make Odd Socks Day a memorable event that highlights the importance of celebrating our differences and standing up against bullying.

We can't wait to see everyone's odd socks!

Friends of Barnett Wood

As well as the Christmas Fair, our Friends team have been busy organising two other fundraising evenings for both children and parents! Please see the flyers attached to this email for further information.






Safeguarding

Through our Safeguarding curriculum, we regularly remind our children of what to do if they have a worry or if they are sad/upset. We encourage the children to talk to a trusted adult or a friend. All classes have 'Worry Monsters' or 'Chatterboxes' for children to let their teacher know if there is a worry or concern that they would like to share. Our child-friendly Safeguarding posters are displayed in every classroom and around the school. Please check that your child knows what to do if they are worried, sad or feel unsafe at any time in school.



[Click here to find out more about our Behaviour and Safeguarding Curriculum.](#)

We aim to develop excellent standards of behaviour through our 'Barnett Wood Way' behaviour curriculum. This curriculum carefully defines the behaviours and habits that we expect pupils to demonstrate, and is underpinned by our five values of Kindness, Respect, Resilience, Trust and Aspiration. We want to support our pupils to grow into adults who are kind, polite and respectful, and who put others before themselves. We believe that as pupils practise these behaviours, over time they become automatic routines that positively shape how they feel about themselves and how other people perceive them.

Our Designated Safeguarding Lead (DSL) is: Mrs Anne Gibbard Headteacher	Our Deputy Designated Safeguarding Lead (DDSL) is: Mrs Becky Clements Assistant Headteacher	Our Deputy Designated Safeguarding Lead (DDSL) is: Mrs Leonie Theobald Senior Teacher
		

The DSLs can be contacted via the school office
on 01372 272701 or via email: dsl@barnett-wood.surrey.sch.uk

What's for lunch?



Our caterers Twelve Fifteen's new Autumn Menu starts after half term.

Twelve 15 Week 1
Autumn/Winter 2025/26 Menu

Weeks Starting: 3rd November, 24th November, 15th December, 19th January, 9th February and 9th March

SURREY COUNTY COUNCIL

Monday	Tuesday	Wednesday	Thursday	Friday
Option 1 ✓ Cheese and Tomato Pizza with Potato Tots	Option 1 ✓ Tex-Mex Beef and Beans with Rice	Option 1 ✓ Roast Chicken with Roast Potatoes and Gravy	Option 1 ✓ Chicken and Vegetable Pie with Creamed Potatoes	Option 1 ✓ Fish Fingers with Oven Chips
Vegetarian Option 2 ✓ Chinese Veggie Noodles	Option 2 ✓ Veggie Sausage Roll with Potato Tots	Option 2 ✓ Sweet Potato and Lentil Sausages with Roast Potatoes and Gravy	Option 2 ✓ Cheesy Tomato Pasta with Garlic Bread	Option 2 ✓ Veggie Dippers with Oven Chips
Option 3 ✓ School's Choice	Option 3 ✓ School's Choice	Option 3 ✓ School's Choice	Option 3 ✓ School's Choice	Option 3 ✓ School's Choice
Sides: ✓ Seasonal Vegetables, Salad Bar & Fresh Bread	Sides: ✓ Seasonal Vegetables, Salad Bar & Fresh Bread	Sides: ✓ Seasonal Vegetables, Salad Bar & Fresh Bread	Sides: ✓ Seasonal Vegetables, Salad Bar & Fresh Bread	Sides: ✓ Seasonal Vegetables, Salad Bar & Fresh Bread
Dessert: ✓ Gingerbread Biscuit	Dessert: ✓ Orange and Peach Jelly	Dessert: ✓ Cheese and Biscuits with sliced Apple	Dessert: ✓ Chocolate Sponge and Chocolate Sauce	Dessert: ✓ Strawberry Mousse

✓ Vegetarian ✓ Hidden veggies ✓ Contains a minimum of 50% fruit

RED TRADER CERTIFIED STANDARDS

Twelve 15 Week 2
Autumn/Winter 2025/26 Menu

Weeks Starting: 10th November, 1st December, 5th January, 26th January, 23rd February and 16th March

SURREY COUNTY COUNCIL

Monday	Tuesday	Wednesday	Thursday	Friday
Option 1 ✓ Creamy Pesto Pasta Bake	Option 1 ✓ Superfood Beef Grill with Potato Tots	Option 1 ✓ Roast Pork with Roast Potatoes and Gravy	Option 1 ✓ Mild Coconut and Lime Chicken with Rice	Option 1 ✓ Harry Ramsden's Fish with Oven Chips
Vegetarian Option 2 ✓ Forest Green Vegan Patty with Potato Tots	Option 2 ✓ Thai Style Mild Coconut and Lime Vegetables with Rice	Option 2 ✓ Cheesy Lentil and Sweet Potato Parcel with Roast Potatoes and Gravy	Option 2 ✓ Cheesy Courgette and Tomato Twist with half a Jacket Potato	Option 2 ✓ Vegetable Fajitas with Oven Chips
Option 3 ✓ School's Choice	Option 3 ✓ School's Choice	Option 3 ✓ School's Choice	Option 3 ✓ School's Choice	Option 3 ✓ School's Choice
Sides: ✓ Seasonal Vegetables, Salad Bar & Fresh Bread	Sides: ✓ Seasonal Vegetables, Salad Bar & Fresh Bread	Sides: ✓ Seasonal Vegetables, Salad Bar & Fresh Bread	Sides: ✓ Seasonal Vegetables, Salad Bar & Fresh Bread	Sides: ✓ Seasonal Vegetables, Salad Bar & Fresh Bread
Dessert: ✓ Lemon Shortbread	Dessert: ✓ Sliced Bananas with Vanilla Custard	Dessert: ✓ Strawberry Jelly	Dessert: ✓ Sticky Orange Cake	Dessert: ✓ Peaches and Yoghurt

✓ Vegetarian ✓ Hidden veggies ✓ Contains a minimum of 50% fruit

RED TRADER CERTIFIED STANDARDS

Lunch Time



The menus are also available on our school website here:

Barnett Wood / SCHOOL LUNCHES

Twelve 15 Week 3
Autumn/Winter 2025/26 Menu

Weeks Starting: 17th November, 8th December, 12th January, 2nd February, 2nd March and 23rd March

SURREY COUNTY COUNCIL

Monday	Tuesday	Wednesday	Thursday	Friday
Option 1 ✓ Veggie Pizza with Potato Tots	Option 1 ✓ Pork Sausages (contain beef) with Creamed Potato and Gravy	Option 1 ✓ Roast Chicken with Roast Potatoes and Gravy	Option 1 ✓ Sweet and Sour Chicken with Rice	Option 1 ✓ Fish Fingers with Oven Chips
Vegetarian Option 2 ✓ Tex-Mex Veg with Rice	Option 2 ✓ Veggie Sausages with Creamed Potato and Gravy	Option 2 ✓ Plant Hero Vegan Roast with Roast Potatoes and Gravy	Option 2 ✓ Sweet Potato Whirl with Rice	Option 2 ✓ Mac 'n' Cheese
Option 3 ✓ School's Choice	Option 3 ✓ School's Choice	Option 3 ✓ School's Choice	Option 3 ✓ School's Choice	Option 3 ✓ School's Choice
Sides: ✓ Seasonal Vegetables, Salad Bar & Fresh Bread	Sides: ✓ Seasonal Vegetables, Salad Bar & Fresh Bread	Sides: ✓ Seasonal Vegetables, Salad Bar & Fresh Bread	Sides: ✓ Seasonal Vegetables, Salad Bar & Fresh Bread	Sides: ✓ Seasonal Vegetables, Salad Bar & Fresh Bread
Dessert: ✓ Fruity Oat Cookie	Dessert: ✓ Chocolate and Banana Shortbread Crunch	Dessert: ✓ Fresh Dairy Yoghurt	Dessert: ✓ Apple Crumble and Custard	Dessert: ✓ Butternut Muffin

✓ Vegetarian ✓ Hidden veggies ✓ Contains a minimum of 50% fruit

RED TRADER CERTIFIED STANDARDS

General Reminders



- **Timings:** Thank you to everyone for working hard to be on time at drop off and collection so far this term. Gates open at 8.20am, classroom doors open at 8.30am. Gates/doors close at 8.35am and collection for all at 3.05pm.
- **Snacks:** Children are provided with a piece of fruit/vegetables at break time. Please be aware that a number of our children have severe allergies and therefore we are a nut and egg free school - please respect this and ensure no products containing nuts are included in packed lunches or snack boxes.
- **Named water bottles to be in school daily** - no squash or juice please!
- **Absence** – please phone (01372 272701) or email (info@barnett-wood.surrey.sch.uk) school as soon as you know that your child will be unable to attend school that day and any subsequent days.
- **Sickness / tummy bugs** – please remember that children cannot come into school until 48 hours after the last episode of sickness or diarrhoea, in order to prevent spreading the infection.
- **Named clothing and personal items** –please ensure that all items are named as we cannot guarantee lost unnamed items are returned to the owner
- **Coats** – please remember that your child/ren need a coat suitable for the weather to be in school with them. Our outdoor learning spaces are used every day.

Our remaining INSET days for this academic year are:

Friday 5th December 2025

Monday 5th January 2026

Monday 13th April 2026

Monday 1st June 2026