



Barnett Wood Infant School



**Welcome to
Year 1
2025-26**



Meet the Year 1 Team

Owls Class

Rabbits Class

Class Teacher
Miss Buckland



Class Teacher
Miss Charlton



LSA - Mrs Stone



LSA - Mrs Doick



LSA - Mrs Smith



LSA - Mrs Bojila

Meet the Year 1 Team



**Kiko Sports
Coach Harvey**



**HLTA
Mrs Manders**

Teachers' PPA - Tuesday afternoons

Our Vision and Values

Our Vision

At Barnett Wood Infant School, children are at the heart of everything we do. We create an environment that is happy, caring and inspiring, where every child feels safe, secure and that they belong. We develop the whole child through offering a broad, balanced, and creative curriculum that challenges children to be the best they can be. Our children develop learning skills that will last a lifetime, so that they can make their best contribution to the community and society. Our children are kind, confident, successful learners who are prepared and inspired for life in the world beyond.

Our Values

At Barnett Wood Infant School, we are.....



Kind

We treat others how we would like to be treated



Respectful

We are thoughtful and considerate to ourselves, others and the world around us.



Trustworthy

We are honest and responsible.



Resilient

When things are tough, we persevere and are determined - we don't give up!



Aspirational

We embrace challenge and aim to be the best we can be!


Our School Rules



BARNETT WOOD INFANT SCHOOL

OUR SCHOOL RULES

 Be Kind

 Be Safe

 Be Ready

Routines

- School day 8.30am – 3.05pm
- PE/Games – Kiko Tuesday
(plimsolls/trainers outside only)
- Dance – Friday
- After school clubs – Football
Monday, Gymnastics Tuesday, Multi-
sports Thursday
- Lunchtime Clubs
- Group Reading book – goes home
Wednesday/Thursday come back to
school on Mondays
- Library books – Thursday







Our Curriculum



- How is it different to EYFS
- Subjects taught discretely eg History, Art
- Foundation subjects are taught in the afternoon using a 2 week timetable
- Alternating subjects each half term - History/Geography
Art/DT
- Transition to longer lessons - Continuous provision still available in the Autumn Term
- Curriculum overviews shared for Phonics every half term
- English and Maths activities are taught in small groups in the Autumn Term



Timetable


 Barnett Wood Infant School
 
 Year 1 OWLS Class Timetable Autumn 2025-26

Time	8.35	8.40 – 9.10	9.10 – 10.00	10.00 – 10.15	10.15 – 10.35	10.35 – 11.40	11.40 – 12.00	12.00 – 1.00	1.00 – 1.50	1.50 – 2.00	2.00 – 2.50	2.50 – 3.05	3.05		
Monday	Register	Early Morning Activities – Reading on the carpet Phonics 8.45-9.10	English	Assembly Reading Group	Break	Maths	Reading Groups	Lunch	Mastering Number	Art	Break	Art	Story	Home	
Tuesday		Early Morning Activities – Reading on the carpet Phonics 8.45-9.10	English	Assembly Reading Group		Maths	Reading Groups		PPA Cover PE	PPA Cover RE		Story			
Wednesday		Early Morning Activities – Reading on the carpet Phonics 8.45-9.10	English	Reading Group		Maths	Reading Groups		Mastering Number	History		History	Story		
Thursday		Early Morning Activities – Reading on the carpet Phonics 8.45-9.10	English	Assembly Attention Bucket		Maths	Reading Groups		Library			Mastering Number	PSHE		Story
Friday		Early Morning Activities – Reading on the carpet Phonics 8.45-9.10	English	Dance		Maths	My Happy Mind		Assembly			Mastering Number	Music		Story

Time	8.35	8.40 – 9.10	9.10 – 10.00	10.00 – 10.15	10.15 – 10.35	10.35 – 11.40	11.40 – 12.00	12.00 – 1.00	1.00 – 1.50	1.50 – 2.00	2.00 – 2.50	2.50 – 3.05	3.05		
Monday	Register	Early Morning Activities – Reading on the carpet Phonics 8.45-9.10	English	Assembly Reading Group	Break	Maths	Reading Groups	Lunch	Mastering Number	Science	Break	Science	Story	Home	
Tuesday		Early Morning Activities – Reading on the carpet Phonics 8.45-9.10	English	Assembly Reading Group		Maths	Reading Groups		PPA Cover PE	PPA Cover RE		Story			
Wednesday		Early Morning Activities – Reading on the carpet Phonics 8.45-9.10	English	Reading Group		Maths	Reading Groups		Mastering Number	Computing		Computing	Story		
Thursday		Early Morning Activities – Reading on the carpet Phonics 8.45-9.10	English	Assembly Attention Bucket		Maths	Reading Groups		PSHE			Mastering Number	Library		Story
Friday		Early Morning Activities – Reading on the carpet Phonics 8.45-9.10	English	Dance		Maths	My Happy Mind		Assembly			Mastering Number	Music		Story



Teaching of Reading

- Phonics sessions daily
- 3 group reads with an adult in school every week, focussing on decoding, prosody and comprehension
- Different genres – fiction and non fiction linked to topic work
- Enjoy sharing books from children's interests or related to our topics
- Phonics Screening June 2026 – information session for parents in May



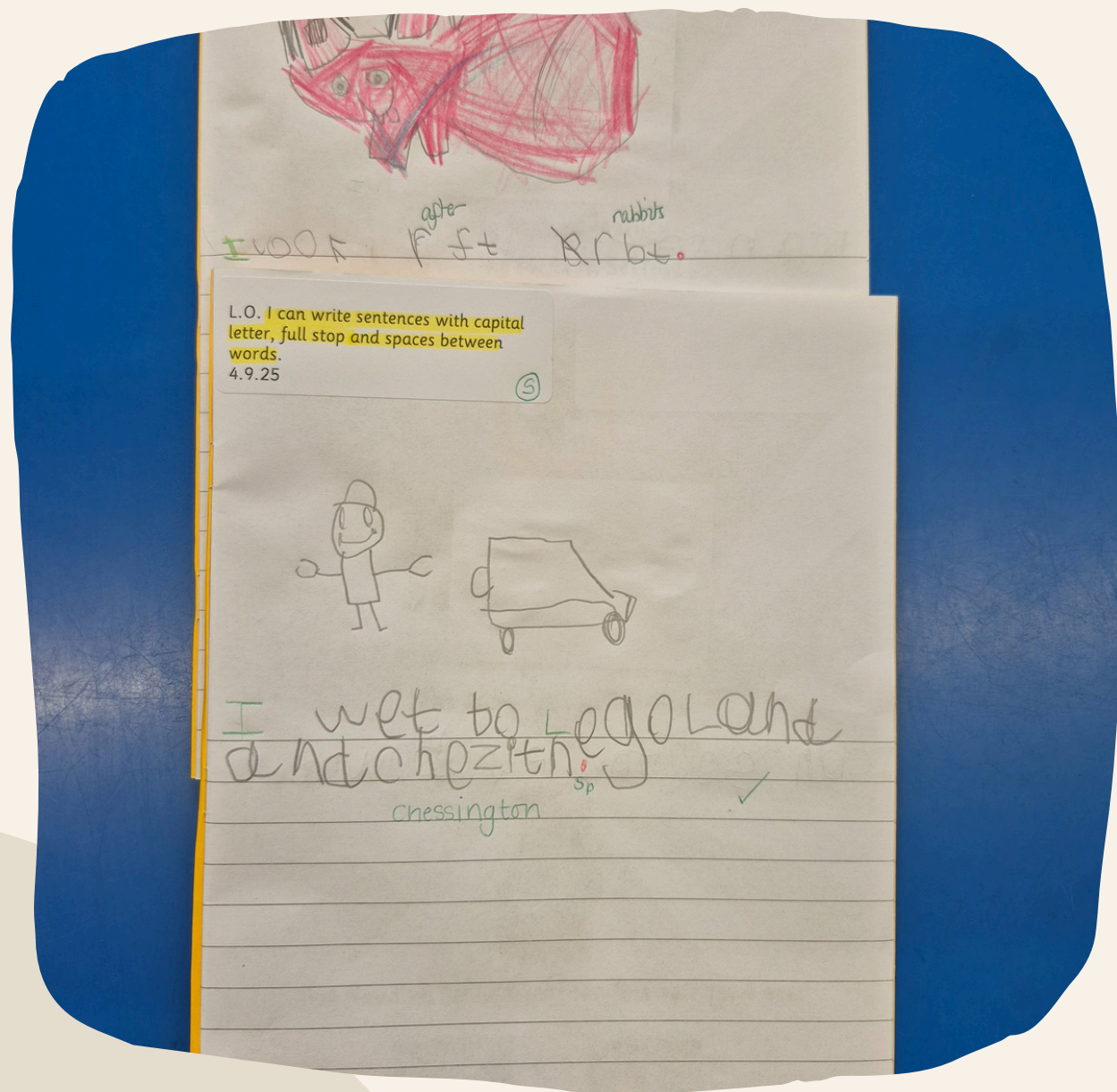
Reading

- Reading for Pleasure books
- Little Wandle Book comes back Mondays.
- Reading Record – Regular Readers Raffle
- Monitoring reading - Please read 3 times at home
- Please remember learning to read is a marathon and not a race!
- We constantly assess the children, we will move them on when they are ready.
- Tricky words at the bottom of the page only
- Reading prompts in the back of the book.



Writing

- Mainly emergent - encourage independent phonetic spelling
- Tricky words – common exception words displayed in the classroom
- Letter formation – Handwriting daily focus during Phonics
- Marking policy - S Support, I Independent
- Talk for Writing - based around a text for approx 4wks, learning writing skills to build up to a final piece



Maths



- Number formation
- Using money - alongside and discretely
- Telling the time - o'clock/half past
- Counting on and back in 1s, 2s, 5s and 10s
- Mathematical language - correct vocabulary

- Using reasoning and discussing methods - starting with numbers to 10, then 20, 50 and 100 to show understanding
- Check their work - encourage independence
- Mastering Number - 4 times a week



Polite Reminders



Listen to your child read their Little Wandle group reading book 3 times weekly and record this and other reading



Do not use your mobile phones on the school site.

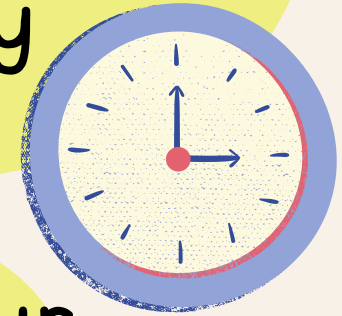
Snack- Fruit or Vegetable only if bringing your own



Return the Little Wandle group reading books promptly on Monday



Ensure your child is on time to school and collected promptly at the end of the day



Notify the office of your child's absence by 9:30am each day they are off



Egg and Nut Free School



We are an EGG and NUT
FREE school.



There are pupils who have a
severe egg and nut allergies.

If your child has packed lunches,
please refrain from including foods
that contain these. Please note many
chocolate spreads also contain nuts.

Attendance and Absence

One of our school priorities this year is to achieve above 96% attendance. We cannot achieve this without your help! It is vital we work together. Attendance is monitored every half term by Mrs Clements.

In line with our 'Attendance and Absence Policy', during this monitoring, if your child's attendance drops below 95% it will be closely monitored

if it continues to fall below 90%, an informal discussion and 'Early Concern, Absence Awareness' letter will be shared.

If attendance continues to fall following this a formal meeting to work together to remove barriers and put support in place.

Please inform the office of any absences before 9:30am

We encourage you to be prompt when dropping off and collecting your child from school.

Importance of attendance leaflets will be shared at the end of this week.

What does this look like in terms of number of days absent for my child?	100%	97%-99.9%	93% - 96.9%	90% - 92.9%	Below 90%
	Attendance Superstar!	Well done, excellent attendance!	Be careful!	Improvement needed.	Persistent absentee.
Sept-June	0 days 0 hours of learning missed	3 days 18 hours of learning missed	7 days 42 hours of learning missed	9 days 54 hours of learning missed	11+ days 66+hours of learning missed
Academic year Sept-July	0 days absent	approximately 4 days absent	approximately 10 days absent	approximately 15 days absent	approximately 19 days absent

Attendance – Penalty Notices

As of 19th August 2024 new statutory guidance has been issued by the government about Attendance.

Request of leave

Request for leave will not be authorised in term time unless the reason given is deemed 'exceptional'.

Each request will take into account the specific facts and circumstances and relevant background context behind the request.



Liability for penalty notices

Where a child is taken out of school for 10 sessions or more (5 full days) and the leave of absence was not authorised by the headteacher, each parent is liable to receive a penalty notice for each child who is absent.

What is the charge for penalty notices?

A penalty notice will be charge at the rate of £160 per child, per parent, if paid within 28 days. This will be reduced to £80 if paid within 21 days of receipt of the notice

If you have incurred a penalty notice relating to your child/ren since 19th August 2024, the 3 year rolling period will be activated from the date of the first penalty, charged at the flat rate of £160. There will be no reduction.

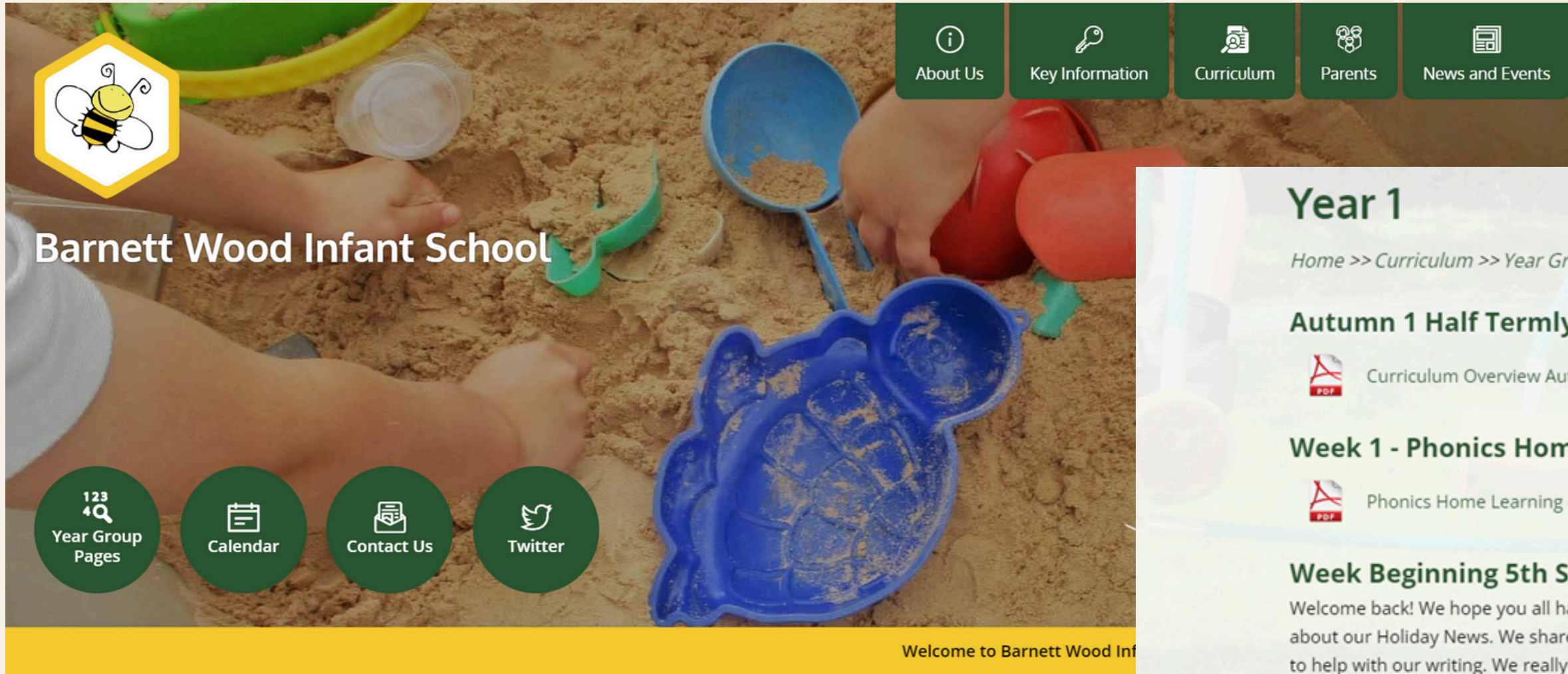
Failure to pay will result in Surrey County Council in considering legal proceedings.

In the rolling 3 year period since the first penalty notice, you will NOT receive a third penalty notice- Surrey County Council will consider prosecution, per parent per child in the Magistrates court.



Our updated Attendance Policy will be shared in the next couple of weeks.

School Website



- Year group page is updated once a fortnight to share highlights from the weeks.
- Purple Mash Login details are in the front of your child's reading record



Classroom Helpers

- We like to encourage parents to come in and help in the classroom.
- We allow the first half term for children to settle before signing up to come in.
- Mrs Gibbard has sent out information on having a DBS check, see newsletter link.
- Meeting for future volunteers 10th October.

General Info

- Purple Mash – log in is in the Reading Record
- School website - Check Year 1 blog
- Pocket toys - named
- Learning Partners
- Book bags/water bottles
- Please make sure that reading books and Reading Records are kept in book bags
- Please make sure your child can carry all their belongings easily – no bottles in book bags
- November Parent Consultations
- Snack – fruit/vegetables only and water - no juice
- Year group trip - Summer term
- Class reps – email or group chats
- Cloakroom messages - say goodbye at the door
- Lost property - please make sure everything is named, check lost property box

Any Questions?



Thank you for coming!

