



# Welcome to Reception!

Barnett Wood Infant School

Meet the Teacher September 2025





# Meet the Reception Team

## Squirrels

**Class Teacher**  
**Mrs Clements**  
**(Mon, Tues)**



**Class Teacher**  
**Mrs Davies**  
**(Wed-Fri)**

## Hedgehogs



**Class Teacher**  
**Mrs Gregory**



**LSA- Mrs Morris**



**LSA- Mrs Rochester**



**LSA- Mrs King**



**LSA- Miss Goble**



**LSA- Mrs Rowlinson**





# Meet the Reception Team



**Mrs Manders**  
**HLTA**



**Coach Harvey**



**Coach Peter**

**KIKO Sports Coaches**

**Teachers' PPA- Wednesday afternoon**





# Our vision and Values

## Our Vision

At Barnett Wood Infant School, children are at the heart of everything we do. We create an environment that is happy, caring and inspiring, where every child feels safe, secure and that they belong. We develop the whole child through offering a broad, balanced, and creative curriculum that challenges children to be the best they can be. Our children develop learning skills that will last a lifetime, so that they can make their best contribution to the community and society. Our children are kind, confident, successful learners who are prepared and inspired for life in the world beyond.

## Our Values

At Barnett Wood Infant School, we are.....

- Kind**  
We treat others how we would like to be treated
- Respectful**  
We are thoughtful and considerate to ourselves, others and the world around us.
- Trustworthy**  
We are honest and responsible.
- Resilient**  
When things are tough, we persevere and are determined - we don't give up!
- Aspirational**  
We embrace challenge and aim to be the best we can be!





# Behaviour Curriculum

We have a 'Barnett Wood Way' Behaviour Curriculum on the website. This sets out: our values, school rules and relentless routines. These are shared during assemblies.

## Our School Rules

**Be kind**



**Be safe**



**Be ready**





# The School Day



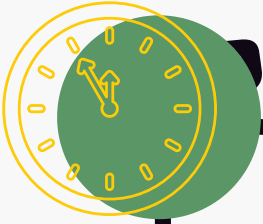
## A morning in Reception at Barnett Wood

- 8:20am-8:30am** Gates open at 8:20am. Doors open at 8:30am for children to come in through the green side door
- 8:35am** Registration- children need to be in class by this time
- 9:00am-9:15am** Phonics (shorter sessions to start- approximately 10 minutes)
- 9:15am-11:20am** 'Playing and learning' time.  
Children have access to the 'snack shack' and 1 adult led group learning runs- Group reading from week 5, 3 times a week
- 11:30am-11:45am** Adult led whole class input- usually Literacy/ topic (Understanding the world), Music or PE





# The School Day



## An afternoon in Reception at Barnett Wood

12:00pm-12:30pm Reception eat lunch in the servery

12:30pm-1:00pm Playtime on the playground with the rest of the school

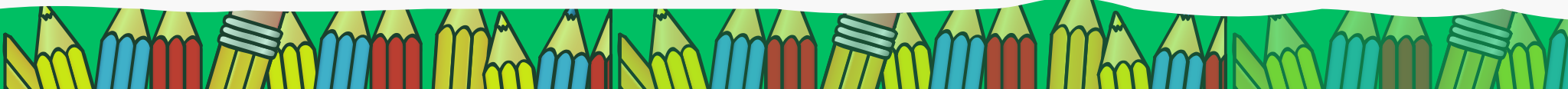
1:00pm-1:05pm Afternoon registration

1:05pm-1:20pm Adult led whole class input- Maths- Mastering number/White Rose

1:20pm-2:30pm 'Playing and learning' time, followed by tidy up time

2:40pm-3pm Storytime

3:05pm Hometime- children are dismissed in the outside area





# What will we be learning this year?

**Autumn 1**

**All About Me**



**Autumn 2**

**Back in time/  
Let's Celebrate**



**Spring 1**

**On the Move!**



**Spring 2**

**Amazing animals**



**Summer 1**

**Fun at the Seaside**



**Summer 2**

**Our Wonderful World**



A full yearly overview and half termly overviews can be found on the website





# The Early Years Curriculum

## Prime Areas

These play an important part in igniting children's curiosity and enthusiasm for learning

Communication and  
Language

Personal, social and  
emotional development

Physical development

## Specific Areas

These strength the prime areas. In these areas children also strengthen and apply skills and learning from the prime areas above

Mathematics

Literacy

Understanding the World

Expressive Arts and Design





# Phonics



We teach phonics everyday using Little Wandle revised Letters and Sounds.

We begin with Foundations for Phonics, focussing on listening skills and sound discrimination

In week 2 we begin teaching Phase 2 by introducing sounds alongside their pronunciation phrase, formation phrase

Phonemes we will be focusing on this week in school -

	<b>Pronunciation Phrase - s</b> Show your teeth and let the s hiss out <b>sssss</b>		<b>Pronunciation Phrase - a</b> Open your mouth wide and make the <b>a</b> sound at the back of your mouth <b>aa</b>
	<b>Pronunciation Phrase - t</b> Open your lips; put the tip of your tongue behind your teeth and press <b>ttt</b>		<b>Pronunciation Phrase - p</b> Bring your lips together, push them open and say <b>pp</b>

At Phase 3 we introduce the mnemonic alongside the grapheme.



A mnemonic is a saying to support children's memory e.g. ai- tail in the rain



# Phonics



## Little Wandle - Letters and Sounds Reception Phonics Home Learning

Phase 2 - Autumn 1 Week 1  
Focus - Phonemes s / a / t / i



Please support your child to practise and reinforce the phonemes and graphemes we are learning in school. More information and support can be found on the Little Wandle website - <https://www.littlewandlelettersandsounds.org.uk/resources/for-parents/>

### Phonemes we will be focusing on this week in school -

**s**

#### Pronunciation Phrase - s

Show your teeth and let the s hiss out **sssss**



#### Pronunciation Phrase - a

Open your mouth wide and make the **a** sound at the back of your mouth **aaa**



#### Pronunciation Phrase - t

Open your lips; put the tip of your tongue behind your teeth and press **ttt**



#### Pronunciation Phrase - p

Bring your lips together, push them open and say **ppp**

We will be orally blending words. Can you hear the phonemes in these words? Can you listen and then repeat the word?

s - a - t      t - a - p      s - a - p

p - a - t      a - t

These sounds are used to help develop the children's blending skills for reading and segmenting skills for spelling.

The focus sounds for each week are added to your child's Phonics folder in their book which should be referred to at home but please keep in their book bag for us to update every Friday.





# Group Reading



Your child will read with an adult three times weekly in a group.



They read the same book focussing on different skills each time: decoding, prosody and comprehension.

Your child will also have 2 'reading for pleasure books' from the library.

They will bring the book home after their 3rd read, usually Thursday in Reception. We expect your child to read this book on 3 separate occasions to you at home, and have this recorded in their reading record.

We visit on **Mondays**

Book box- place books inside reading record every **Monday**. Please do not put water bottles in book bags as this damages our books. Any lost or damaged books will need to be replaced.





# Reading



Please keep an eye out for a Phonics workshop recording dropping into your inboxes in the next couple of weeks.

This is a must watch!

## Library

We will visit the library each week.

Children will choose 2 reading for pleasure books.

Reception visit on Monday



## Birthday books

To celebrate your child's birthday, we are asking parents if they would like to donate a book from our Amazon Wish List.



## Reading Raffle

Each time you read with your child and record it, they will receive 1 raffle ticket, for the draw on Fridays





# Mathematics



Developing a strong grounding in number is essential so that all children develop the necessary building blocks to excel mathematically.

**Mathematics in Early Years focusses on...**

**Counting confidently to 10**

**Developing a deep understanding of the numbers to 10 e.g. the Threeness of 3**

**The relationships between numbers to 10 and the patterns within those numbers e.g. 6 is less than 10, one more, one less, the order of numbers**

**Developing a secure knowledge and vocabulary from which mastery of mathematics is built e.g. using manipulatives including dice frames, tens frames and counters**

**We focus on a mastery approach in Maths at Barnett Wood, called 'Mastering Number'. This approach focusses small step teaching, giving children a secure understanding of mathematical concepts before moving on**



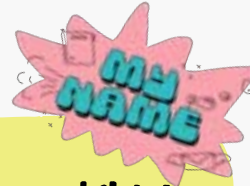


# Independence

We are encouraging the children to be independent and value your support with this:-

NAME: \_\_\_\_\_

Ensure all items of clothes are named- we can then return them quickly. Please use a permanent pen rather than biro.



Encourage your child to recognise their own name.

Named water bottle & snack (fruit or veg)



Put on coats, cardigans, jumpers



putting on socks and shoes/plimsolls



own toileting



PE Wednesday afternoon – KIKO Multi-skills (apparatus, ball skills). Please ensure earrings are removed for these days and long hair tied back. Please ensure full PE kit in bags are in school everyday, we will send them home each term to be washed.





# Your child's progress

We track and share your child's progress in the following ways...

## Reception Baseline Assessment (RBA)

Schools are required to administer a Reception Baseline Assessment for all Reception pupils by the end of this half term

## On Entry Assessment

This is made during the first half term to enable us to find out where your child is in their development.

We build a picture of your child's development through joining in with their play.

## When and how do we share their progress with you?

Parent consultations will be held on Tues 4th and Thursday 6th November and again on Tues 17th and Thursday 19th March.

We also send an end of year 'Record of Achievement'





# Attendance

One of our school priorities this year is to achieve above 97% attendance. We cannot achieve this without your help! It is vital we work together.

## Monitoring

Attendance is monitored every half term by Mrs Clements.

In line with our 'Attendance and Absence Policy', during this monitoring, if your child's attendance drops below 95% it will be closely monitored

if it continues to fall below 90%, an informal discussion and 'Early Concern, Absence Awareness' letter will be shared.

If attendance continues to fall following this a formal meeting to work together to remove barriers and put support in place.

Please inform the office of any absences before 9:30am

We encourage you to be prompt when dropping off and collecting your child from school.

Importance of attendance leaflets will be shared at the end of this week.

What does this look like in terms of number of days absent for my child?	100%	97%-99.9%	93% - 96.9%	90% - 92.9%	Below 90%
	Attendance Superstar!	Well done, excellent attendance!	Be careful!	Improvement needed.	Persistent absentee.
Sept-June	0 days 0 hours of learning missed	3 days 18 hours of learning missed	7 days 42 hours of learning missed	9 days 54 hours of learning missed	11+ days 66+ hours of learning missed
Academic year Sept-July	0 days absent	approximately 4 days absent	approximately 10 days absent	approximately 15 days absent	approximately 19 days absent





# Attendance- Penalty Notices

As of 19th August 2024 new statutory guidance has been issued by the government about Attendance.

## Request of leave

Request for leave will not be authorised in term time unless the reason given is deemed 'exceptional'.

Each request will take into account the specific facts and circumstances and relevant background context behind the request.



## Liability for penalty notices

Where a child is taken out of school for 10 sessions or more (5 full days) and the leave of absence was not authorised by the headteacher, each parent is liable to receive a penalty notice for each child who is absent.

## What is the charge for penalty notices?

A penalty notice will be charged at the rate of £160 per child, per parent, if paid within 28 days. This will be reduced to £80 if paid within 21 days of receipt of the notice

If you have incurred a penalty notice relating to your child/ren since 19th August 2024, the 3 year rolling period will be activated from the date of the first penalty, charged at the flat rate of £160. There will be no reduction. Failure to pay will result in Surrey County Council in considering legal proceedings.

In the rolling 3 year period since the first penalty notice, you will NOT receive a third penalty notice- Surrey County Council will consider prosecution, per parent per child in the Magistrates court.





# Tapestry



It is important to build up a picture of your child as a whole, including what they can do at school but also at home!



Please let us know if you have not received your activation email from Tapestry if you gave consent on Arbor



We encourage you to add your own observations of significant achievements





# Home School Agreement

- Research has consistently shown that active parental interest makes a great deal of difference to how well children do at school,
- Parents can help more effectively if they know what the school is trying to achieve and what they can do to offer support
- Our home-school agreement provides a framework for the development of such a partnership. We believe that in order to improve and be the best school we can, it is important that we all work in partnership
- With this in mind, we are providing this Home School Agreement for all families





# Home School Agreement



## As a school we shall endeavour to:

- .be committed to safeguarding and promoting the welfare of the children;
- .create an environment that is happy, caring and inspiring in which each child is valued as an individual;
- .promote our school values of kindness, respect, trust, resilience and aspiration through our words and actions;
- .encourage children to do their best at all times, developing independence and responsibility for their own learning, behaviour and belongings;
- .meet each child's individual needs and to extend his/her knowledge, skills and abilities;
- .ensure that each pupil has access to all areas of the curriculum;
- .provide regular information to parents about their child's progress, welfare and achievements, and to inform at an early stage of any worries or concerns where necessary.





# Home School Agreement



## As a family we shall endeavour to:

- .be committed to safeguarding and promoting the welfare of the children;
- .support the schools values of kindness, respect, trust, resilience and aspiration;
- .encourage our child to value learning and to support them at home, including listening to and recording our child reading at least 3 times per week;
- .help our child to develop independence and a greater responsibility for his/her own behaviour and belongings;
- .communicate to the school any information which may affect our child's learning and/or welfare;
- .ensure that our child attends regularly and punctually, and to provide an explanation for any absence;
- .punctuality – to ensure my child arrives each day at 8:30am and is collected at 3:05pm each day;
- .convey any concerns that may arise, and to support the school in helping to resolve them calmly and fairly; name all school uniform and personal belongings, and to ensure that my child has a coat available at school at all times;
- .read and act upon any communications sent by the school;
- not share images/videos of children taken during school activities on social media, to help safeguard all children





# Home School Agreement

## As a pupil I shall endeavour to:

- .always be the best I can be;
- .follow the school values of kindness, respect, trust, resilience and aspiration;
- .follow the school rules - we are kind, we know how to be safe and we are ready to learn;
- .let others speak and listen;
- .take care of my belongings, and those of other people;
- .tell a grown up if I am upset or unhappy;
- .keep myself safe online..





# Home School Agreement

Where can I read a copy of the Home School Agreement?

You can find a copy of the Home School Agreement on our school website:

[Home School Agreement | Barnett Wood Infant School](#)





# Polite reminders

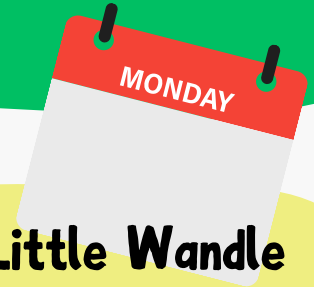


**Listen to your child read their Little Wandle group reading book 3 times weekly and record this and other reading**



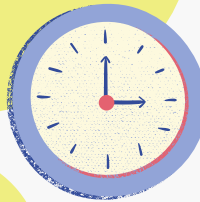
**Do not use your mobile phones on the school site.**

**Snack- Fruit or Vegetable only if bringing your own**



**Return the Little Wandle group reading books promptly on Monday**

**Ensure your child is on time to school and collected promptly at the end of the day**

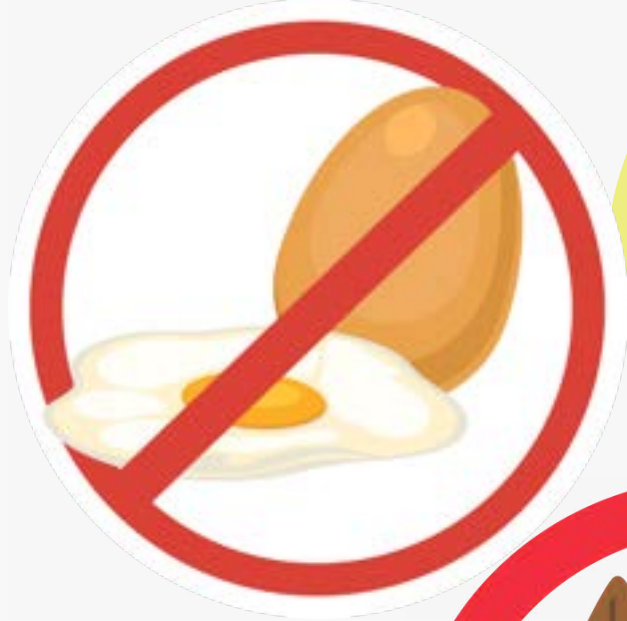


**Notify the office of your child's absence by 9:30am each day they are off**





# Egg and Nut Free School



**We are an EGG and NUT FREE school.**



**There are pupils who have a severe egg and nut allergies.**

**If your child has packed lunches, please refrain from including foods that contain these. Please note many chocolate spreads also contain nuts.**





# Classroom Helpers

**We like to encourage parents to come in and help in the classroom.**

**There will be a Parent Volunteers safeguarding meeting on**

**Friday 10th October at 8:45-9:30am.**

**All regular volunteers are required to have a DBS check.**

**We allow the first half term for children to settle before signing up to come in.**





# General Info

- School website- check every other week for updates on the year group page
- Purple Mash login- Inside reading record
- Learning partners
- Bookbags, water bottles (water only) and snack (fruit/veg only)- to the classroom
- Please make sure that reading records, books and phonics folders are kept in bookbags
- Please make sure your child can carry their belongings easily- **no bottles in bookbags**
- Year group trip- Nower Wood Summer Term date TBC
- Class reps
- Cloakroom messages- please leave with an LSA who will pass onto your child's class teacher
- PE kit- on peg all term- will send home before each holiday to wash.





# Thank you

**Any questions?**



**Please feel free to speak to a  
member of the Reception Team at  
pick up if you have any questions at  
any point**

